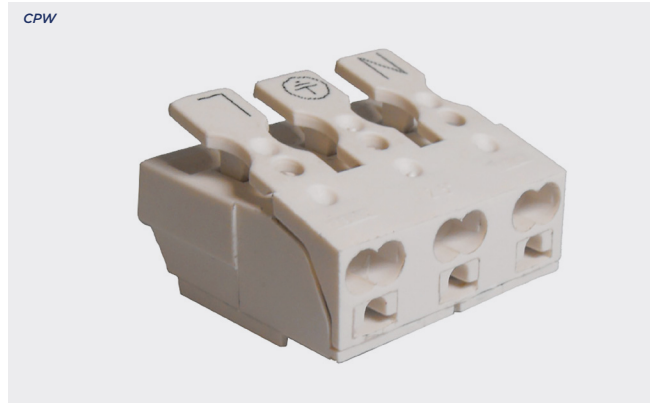


Push-in fast connectors

Product overview

- Screwless connectors for fast and secure wiring installations
- Installation side wires held by lever clamp
- Appliance side held by spring clamp
- Additional entry for cable capacitors
- Suitable for rigid and single strand copper wire
- Moulded in UL94-V0 self extinguishing PA66
- 2 to 5 poles
- Three different types of earth
- Fixing pin options
- Custom terminal markings available on request
- Halogen free
- Glow wire tested EN60695-2-11
- CE, ,  approved



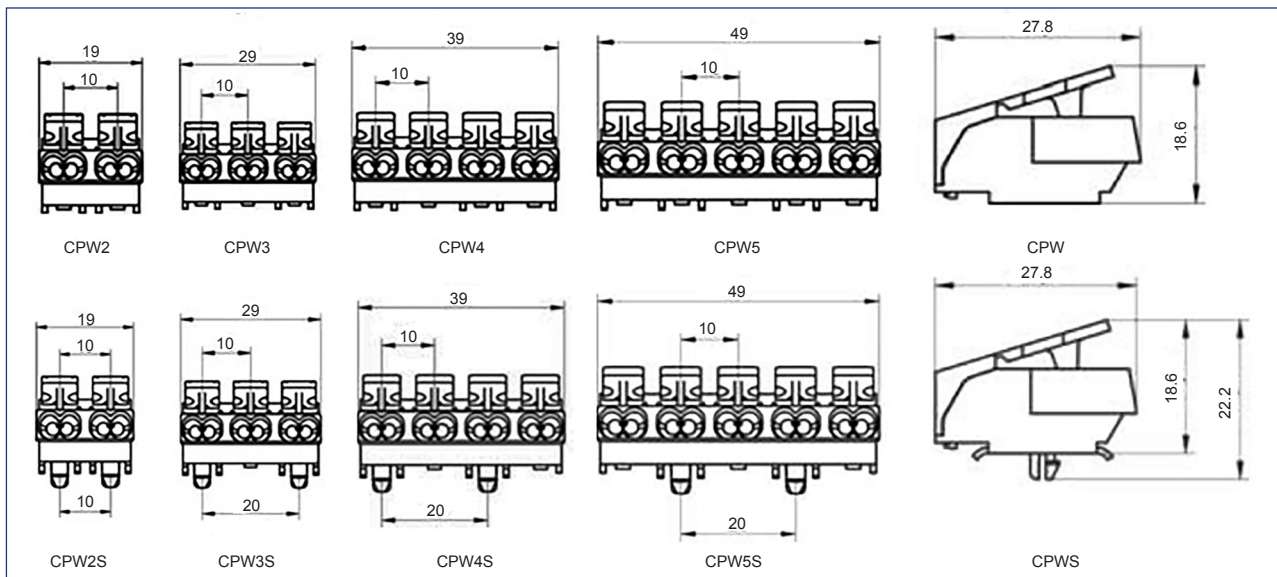
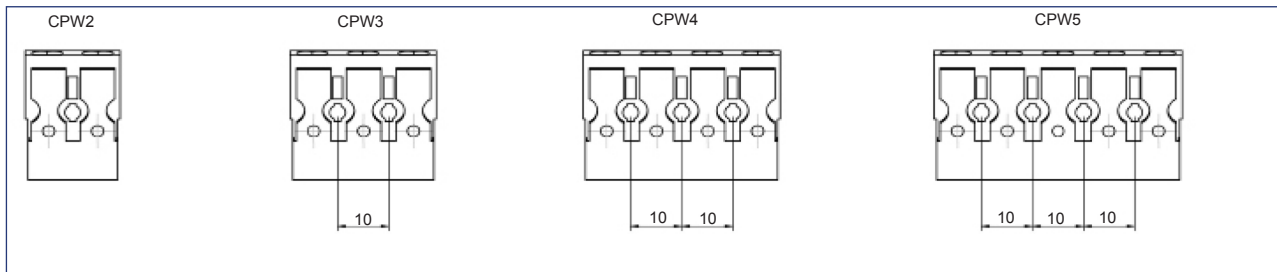
SPECIFICATION	
Rating	24A 450VAC
Working temperature	-30°C to 110°C
Moulding	UL94-V0 flame retardant PA66
Insert strap	Steel
Insert	Steel
Marking	Standard N Neutral L Live ↓ Earth
Cable capacity	Appliance side max. Appliance side min. Capacitor max. Capacitor min. Installation side max. Installation side min.
Wire trimmings lengths	0.5mm ² to 1mm ² 1.5mm ² to 2mm ² Capacitor
	2x 2.5mm ² 0.75mm ² 0.75mm ² 0.5mm ² 2x 2.5mm ² 1mm ²
	8mm - 9mm 9mm - 10mm 9mm - 11mm

Without fixing pins

POLES	WITHOUT EARTHING	EARTH A	EARTH B	EARTH C
2	CPW2	-	-	-
3(2 + Earth)	CPW3	CPW3A	CPW3B	CPW3C
4(3 + Earth)	CPW4	CPW4A	CPW4B	CPW4C
5(4 + Earth)	CPW5	CPW5A	CPW5B	CPW5C

With fixing pins

POLES	WITHOUT EARTHING	EARTH A	EARTH B	EARTH C
3(2 + Earth)	CPW3S	CPW3SA	CPW3SB	CPW3SC
4(3 + Earth)	CPW4S	CPW4SA	CPW4SB	CPW4SC
5(4 + Earth)	CPW5S	CPW5SA	CPW5SB	CPW5SC



002
PCB TERMINAL
BLOCKS

081
TERMINAL STRIPS

095
WIRE TO BOARD
CONNECTORS

100
CIRCULAR
CONNECTORS

151
IP68 CONNECTORS

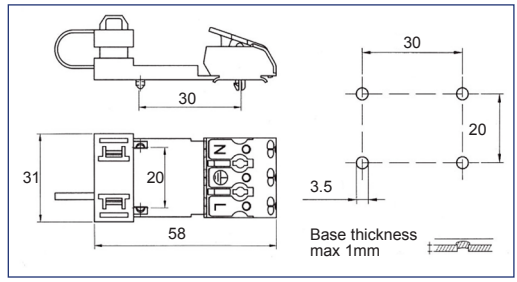
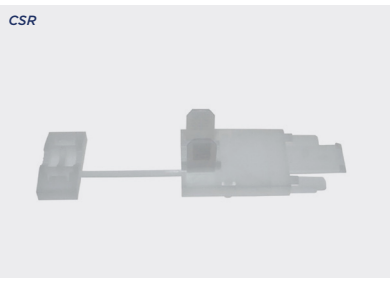
158
INTERFACE
MODULES AND
RELAY BASES



Strain relief

Product overview

- Clamps external conductors in lighting fixtures according to EN 60598
- Natural colour PA6
- Relieves strain on cables
- Prevents conductors from twisting
- Protects wire coating from abrasion and friction



PART NO.	TERMINAL STRIP
CSR6	CPW