

CamdenBoss Components

PCB Terminal Blocks
Interconnection
Fuses & Fuseholders
LED's and Indicators
Miniature Switches
Limit & Safety Switches
Control Products
Interface Modules & Supports
Relay Bases
Enclosures
Batteries
Transformers

CAMDENBOSS
ELECTRONICS & ENCLOSURES

MINIATURE SWITCHES

MICROSWITCHES

V3 Type Microswitches

5A

CSM305

p135

10A

CSM310

p135

15A

CSM315

p135

V4 Sub-miniature

5A

CSM405

p136

Ultra Miniature

1A

CSMU01

p137

LIMIT &
SAFETY
SWITCHES

CONTROL
PRODUCTS

TACT SWITCHES

3.5x6mm Case Size

Through PCB Terminals

CST356T

p138

Surface Mount

CST356S

p138

6x6mm Case Size

Through PCB Terminals

CST06ST

p139

PCB Mount

CST06SS

p139

Horizontal PCB Terminals

CST06SH

p139

12x12mm

Through PCB Terminals

CST12ST

p140

Surface Mount

CST12SS

p140

INTERFACE
MODULES &
SUPPORTS

RELAY
BASES


ENCLOSURES

BATTERIES

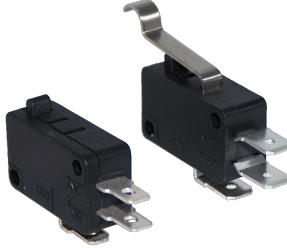
TRANS-
FORMERS

MINIATURE SWITCHES

V3 Type Microswitches 5A, 10A & 15A

- Rating 5A ,10A & 15A switching S.P.D.T.
- Coil spring mechanism
- 6.3mm (.250), 4.8mm (.187) quick connect, solder & screw terminals
- Button, lever or roller actuators
-  approved

CSM3



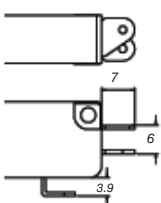
SPECIFICATION

| | | |
|---------------------|-----------------------|----------------------------------|
| Rating | CSM31500 | 15A/250VAC |
| | CSM31000 | 10A/250VAC |
| | CSM30500 | 5A/250VAC |
| Contact resistance | 30mΩ max | |
| Insulation strength | 100MΩ min/500VAC | |
| Electrical Life | 50,000 operations min | |
| Temperature range | -10°C to +105°C | |
| Material | Case | PBT |
| | Button | Bakelite |
| | Actuator | Stainless steel |
| | Contacts | AgNi10-Cu Silver Plated Brass |

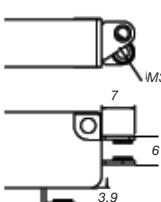
| 15A | 10A | 5A | ACTUATOR STYLE | OPERATING FORCE MAX | RELEASE FORCE MAX | OPERATING POSITION | PRE TRAVEL MAX | MOVEMENT DIFFERENTIAL | OVER TRAVEL MIN |
|-----------|-----------|-----------|------------------|---------------------|-------------------|--------------------|----------------|-----------------------|-----------------|
| CSM31500- | CSM31000- | CSM30500- | Button | 3N | 0.7N | 14.9 ± 0.4mm | 1.4mm | 0.4mm | 1mm |
| CSM31510- | CSM31010- | CSM30510- | Short Lever | 3N | 0.7N | 15.8 ± 0.5mm | 1.4mm | 0.5mm | 1mm |
| CSM31520- | CSM31020- | CSM30520- | Standard Lever | 0.7N | 0.15N | 16.3 ± 1.2mm | 4mm | 1mm | 2mm |
| CSM31530- | CSM31030- | CSM30530- | Long Lever | 0.25N | 0.05N | 17.2 ± 2.5mm | 8mm | 2mm | 4mm |
| CSM31531- | - | CSM30531- | Long Wide Lever | 0.25N | 0.07N | 17.2 ± 2.5mm | 8mm | 2mm | 4mm |
| CSM31540- | CSM31040- | CSM30540- | Simulated Roller | 1.05N | 0.2N | 19.5 ± 1.2mm | 4mm | 1mm | 2mm |
| CSM31550- | CSM31050- | CSM30550- | Standard Roller | 3.2N | 0.6N | 21.4 ± 0.6mm | 1.4mm | 0.4mm | 1mm |
| CSM31560 | CSM31060- | CSM30560- | Long Arm Roller | 0.8N | 0.15N | 21.4 ± 1.2mm | 4mm | 1mm | 2mm |

Types of Terminal:

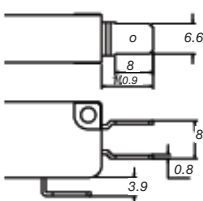
Suffix A = Solder



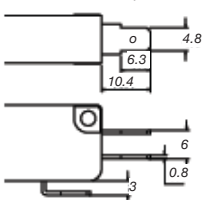
Suffix B = Screws



Suffix O = 8.8 quick connect

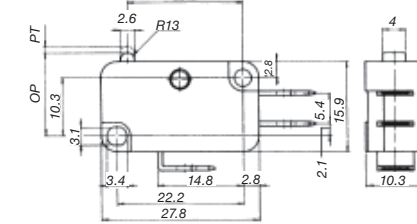


Suffix D = 4.8 quick connect

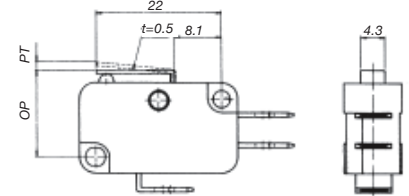


Types of Actuator:

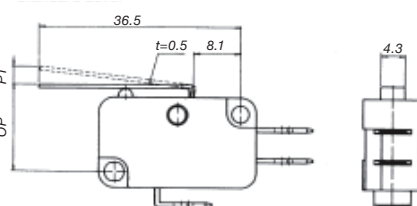
Button



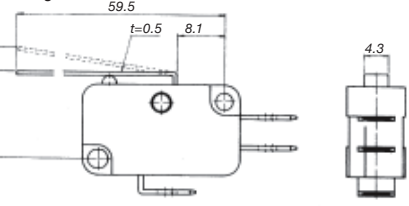
Short Lever



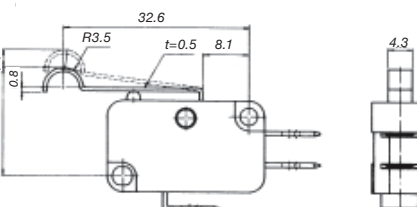
Standard Lever



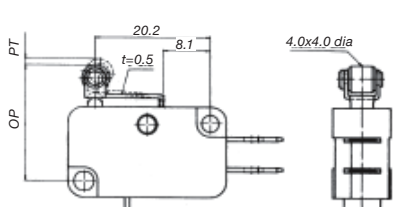
Long Lever



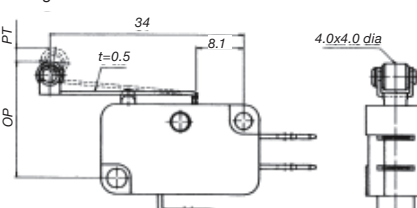
Simulated Roller



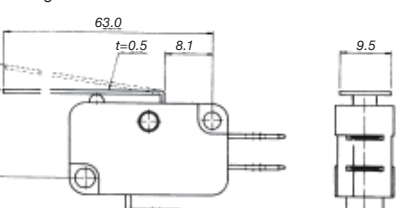
Standard Roller



Long Arm Roller



Long Wide Lever



PCB
TERMINAL
BLOCKS

INTER-
CONNECTION

FUSES &
FUSE-
HOLDERS

LEDs &
INDICATORS

MINIATURE
SWITCHES

LIMIT &
SAFETY
SWITCHES

CONTROL
PRODUCTS

INTERFACE
MODULES &
SUPPORTS

RELAY
BASES

ENCLOSURES

BATTERIES

TRANS-
FORMERS

MINIATURE SWITCHES

V4 Type Sub Miniature Microswitches 5A

- Rating 5A switching S.P.D.T. (10A to order)
- Long life coil spring mechanism
- Solder, PCB, 90° PCB mounting or 2.8mm quick connect terminals
- Button, lever or roller actuators
- Anti Solder Wicking
- cULus approved

CSM405



| SPECIFICATION | |
|---------------------|---|
| Rating | 5A/250VAC (10A to order) |
| Contact resistance | 50mΩ max |
| Insulation strength | 100MΩ min/500VDC |
| Electrical Life | 50,000 operations min |
| Temperature range | -10°C to +125°C |
| Material | Case PBT Button PPS Actuator Stainless steel Contacts AgNi10 |
| Terminals | Brass alloy H65 Silver Plated |

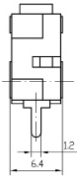
| ACTUATOR STYLE | OPERATING FORCE MAX | RELEASE FORCE MAX | OPERATING POSITION | PRE TRAVEL MAX | MOVEMENT DIFFERENTIAL | OVER TRAVEL MIN |
|------------------------------------|---------------------|-------------------|--------------------|----------------|-----------------------|-----------------|
| CSM40500- Button | 1.5N | 0.3N | 8.6 ± 0.4mm | 0.8mm | 0.2mm | 0.5mm |
| CSM40510- Short Lever | 0.25N | 0.04N | 8.9 ± 1mm | 4.6mm | 0.8mm | 0.8mm |
| CSM40511- Short Upturned Lever | | | | | | |
| CSM40520- Standard Lever | 0.25N | 0.06N | 8.9 ± 1mm | 5mm | 0.8mm | 1.2mm |
| CSM40530- Long Lever | 0.2N | 0.03N | 9.6 ± 2mm | 7.5mm | 1.5mm | 1.6mm |
| CSM40540- Simulated Roller | 0.25N | 0.04N | 12 ± 1.2mm | 4.7mm | 0.8mm | 1.2mm |
| CSM40550- Standard Roller | 0.25N | 0.04N | 15.2 ± 1mm | 4.8mm | 0.9mm | 1.2mm |
| CSM40570- Wave Lever | | | | | | |
| CSM40580- Extra Long Lever | 0.1N | 0.02N | 9.8 ± 1.5mm | 8mm | 2.5mm | 1.5mm |
| CSM40581- Extra Long Stepped Lever | | | | | | |

Types of Terminals: Types of Actuators:

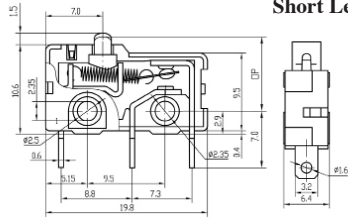
Suffix A = Solder



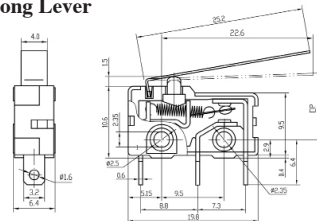
Button



Short Lever



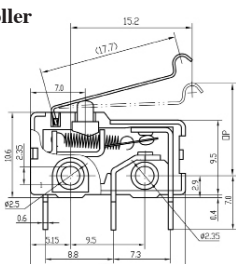
Long Lever



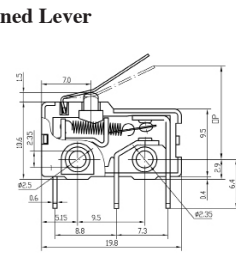
Suffix E = 2.8mm quick connect



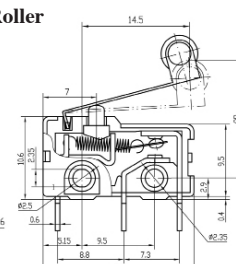
Simulated Roller



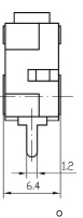
Short Upturned Lever



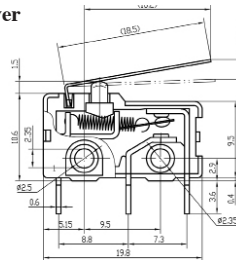
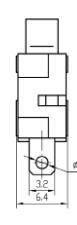
Standard Roller



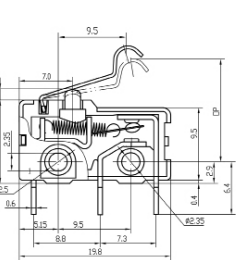
Suffix F = PCB mount



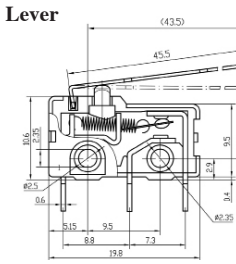
Standard Lever



Wave Lever



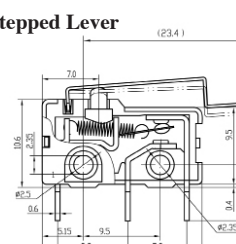
Extra Long Lever



Suffix G = 90



Extra Long Stepped Lever



OSM405 Series Replaces OSM35 Series
 OSM405 Series Terminal Suffix E, F, G Replaces OSM35 Series Terminal Suffix B, C, D respectively
 OSM405 Series Lever Options 30, 40, 11, 20, 41, 81 Replaces OSM35 Series Lever Options 20, 30, 40, 60, 70, 90
 Example OSM40530E replaces OSM3520B
 Example OSM40511G replaces OSM3540D
 Example OSM40541F replaces OSM3570C
 Example OSM40540E replaces OSM3530C
 Example OSM40520E replaces OSM3560B
 Example OSM40581G replaces OSM3590D



+44 (0)1638 716101
 info@camdenboss.com
 www.camdenboss.com

We operate a constant improvement policy, our products are subject to change without notice.

Ver 1.1
 Iss 1

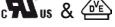


PCB TERMINAL BLOCKS
 INTER-CONNECTION
 FUSES & FUSE-HOLDERS
 LEDs & INDICATORS
 MINIATURE SWITCHES
 LIMIT & SAFETY SWITCHES

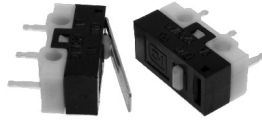
CONTROL PRODUCTS
 INTERFACE MODULES & SUPPORTS
 RELAY BASES
 ENCLOSURES
 BATTERIES
 TRANSFORMERS

MINIATURE SWITCHES

Ultra Miniature Microswitches

- Rating 3A switching S.P.D.T.
- Space saving
- Button, lever or roller actuators
- PCB mounting
- 90° Pins available to order
-  approved

CSMU01



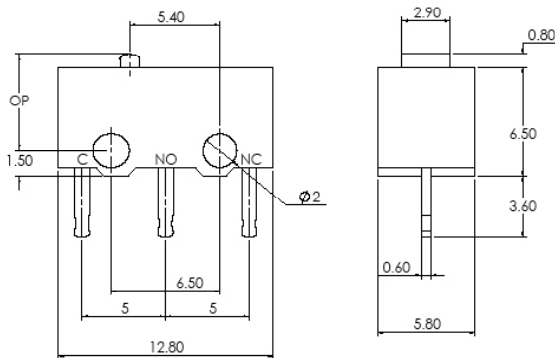
SPECIFICATION

| | | |
|---------------------|-------------------------------|-----------------|
| Rating | 3A/125VAC | |
| Contact resistance | 50mΩ max | |
| Insulation strength | 100MΩ min/500VDC | |
| Electrical Life | 10,000 operations min | |
| Temperature range | -10°C to +85°C | |
| Material | Case | PBT |
| | Button | PBT |
| | Actuator | Stainless steel |
| | Contacts | AgNi10 |
| Terminals | Brass alloy H65 Silver Plated | |

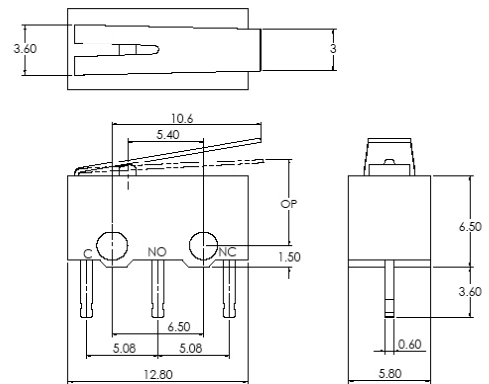
| | ACTUATOR STYLE | OPERATING FORCE MAX | RELEASE FORCE MAX | OPERATING POSITION | PRE TRAVEL MAX | MOVEMENT DIFFERENTIAL | OVER TRAVEL MIN |
|----------|------------------|---------------------|-------------------|--------------------|----------------|-----------------------|-----------------|
| CSMU0100 | Button | 1.5N | 0.08N | 5.5 ± 0.3mm | | 0.2mm | 0.2mm |
| CSMU0101 | Tapered Lever | 0.23N | 0.03N | 6.2 ± 0.8mm | | 0.7mm | 0.7mm |
| CSMU0106 | Parallel Lever | 0.23N | 0.03N | 7 ± 1.2mm | | 0.7mm | 0.7mm |
| CSMU0140 | Simulated Roller | 0.4N | 0.05N | 8.2 ± 1.5mm | 4.2mm | 0.9mm | 0.9mm |

Types of Actuator:

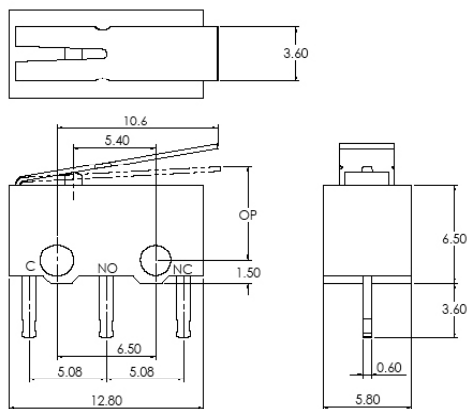
Button



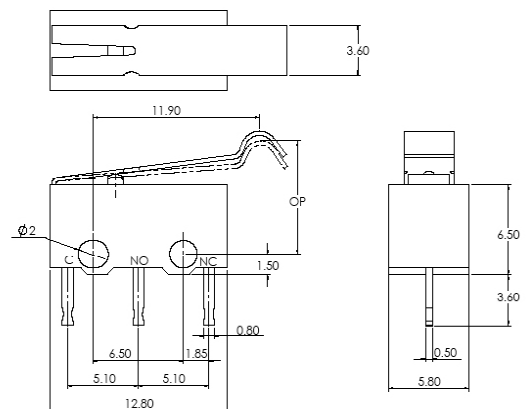
Tapered Lever



Parallel Lever



Simulated Roller



MINIATURE SWITCHES

3.5x6mm Tact Switches

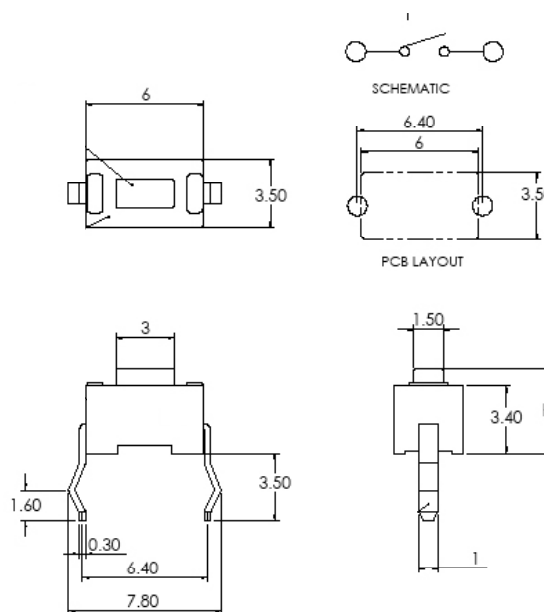
- Compact design
- Advanced switch technology
- Positive tactile action
- Tamper proof application
- Flow solder wash-away cleaning
- Through-hole PCB and surface mount terminals
- Can be supplied taped for auto-insertion, add suffix /T

| SPECIFICATION | | |
|---------------------|-----------------------|-------------------------------|
| Rating | 50mA/12VDC | |
| Contact resistance | 100mΩ max | |
| Insulation strength | 100MΩ min/500VDC | |
| Electrical life | | |
| Through Hole | 30,000 operations min | |
| Surface Mount | 30,000 operations min | |
| Temperature range | -10°C to +60°C | |
| Operating force | 180GF ± 50GF | |
| Material | Case | Nylon |
| | Button | Nylon |
| | Contacts | Stainless Steel Silver Plated |
| Terminals | Brass Silver Plated | |

Through-hole PCB Terminals

| TYPE NO. | BUTTON HEIGHT |
|-----------|---------------|
| CST35643T | 4.3mm |
| CST35605T | 5.0mm |

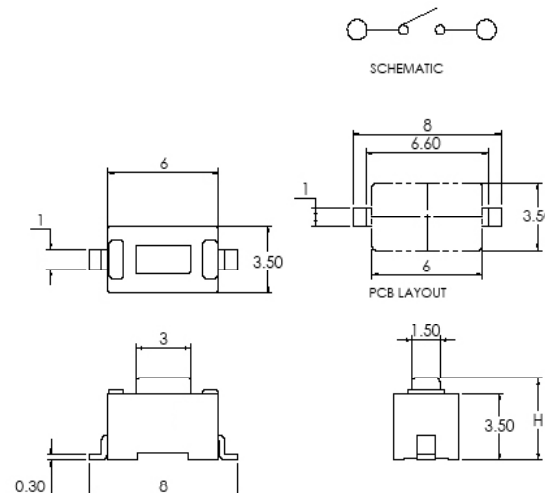
CST356T



Surface Mount Terminals

| TYPE NO. | BUTTON HEIGHT |
|-----------|---------------|
| CST35643S | 4.3mm |
| CST35605S | 5.0mm |

CST356S



+44 (0)1638 716101
 info@camdenboss.com
 www.camdenboss.com

We operate a constant improvement policy,
 our products are subject to change without notice.

Ver 1.1

- PCB TERMINAL BLOCKS
- INTER-CONNECTION
- FUSES & FUSE-HOLDERS
- LEDs & INDICATORS
- MINIATURE SWITCHES
- LIMIT & SAFETY SWITCHES
- CONTROL PRODUCTS
- INTERFACE MODULES & SUPPORTS
- RELAY BASES
- ENCLOSURES
- BATTERIES
- TRANSFORMERS

MINIATURE SWITCHES

6x6mm Tact Switches

- Advanced switch technology
- Positive tactile action
- Tamper proof application
- Flow solder wash-away cleaning
- Through-hole PCB, surface mount & horizontal terminals
- Square & round button styles
- Other button heights available
- Can be supplied taped for auto-insertion, add suffix /T

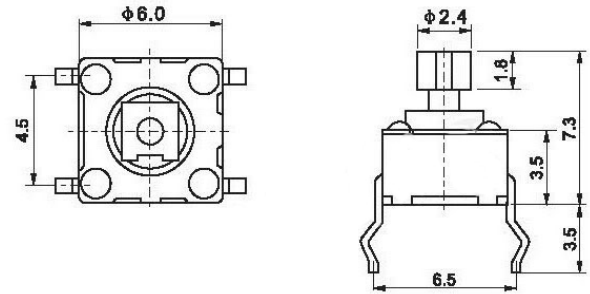
SPECIFICATION

| | | |
|---------------------|---------------------|-------------------------------|
| Rating | 50mA/12VDC | |
| Contact resistance | 100mΩ max | |
| Insulation strength | 100MΩ min/500VDC | |
| Electrical life | CST06S00T | 100,000 operations min |
| | CST06S00S | 100,000 operations min |
| | CST06S00H | 100,000 operations min |
| Temperature range | -10°C to +60°C | |
| Operating force | 180 ± 70g | |
| Material | Case | Nylon |
| | Button | Nylon |
| | Contacts | Phosphor Bronze Silver Plated |
| Terminals | Brass Silver Plated | |

Through-hole PCB Terminals

| TYPE NO. | BUTTON HEIGHT | BUTTON SIZE |
|-----------|---------------|-------------|
| CST06S0AT | 7.4mm | 2.4 x 2.4mm |
| CST06S43T | 4.3mm | ø3.4mm |
| CST06S05T | 5mm | ø3.4mm |
| CST06S73T | 7.3mm | ø3.4mm |
| CST06S08T | 8mm | ø3.4mm |
| CST06S95T | 9.5mm | ø3.4mm |
| CST06S13T | 13mm | ø3.4mm |

CST06S0AT



CONTROL PRODUCTS

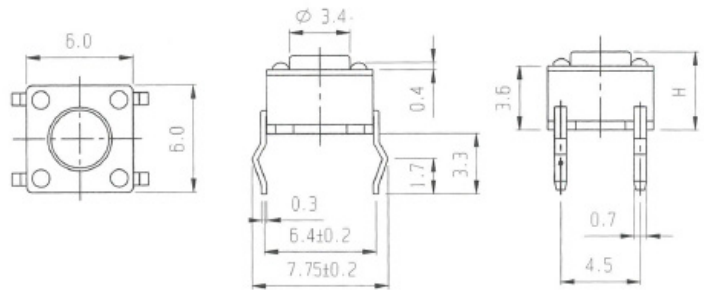
INTERFACE MODULES & SUPPORTS

Surface Mount Terminals

| TYPE NO. | BUTTON HEIGHT |
|-----------|---------------|
| CST06S43S | 4.3mm |
| CST06S05S | 5mm |
| CST06S08S | 8mm |

Suffix /T = Tape & Reel

CST06ST

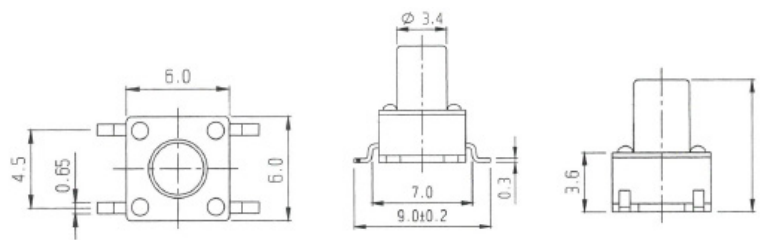


BATTERIES

Horizontal PCB Terminals

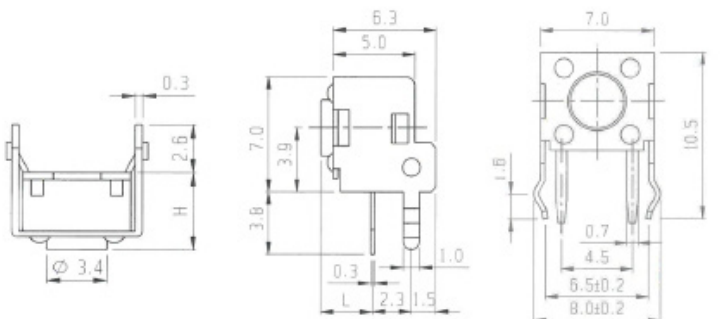
| TYPE NO. | BUTTON HEIGHT |
|-----------|---------------|
| CST06S43H | 4.3mm |
| CST06S05H | 5mm |
| CST06S08H | 8mm |

CST06SS



TRANSFORMERS

CST06SH



MINIATURE SWITCHES

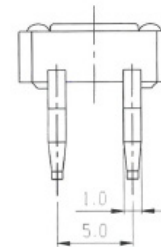
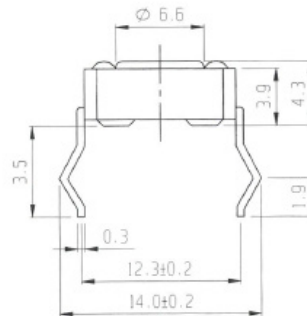
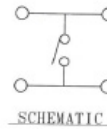
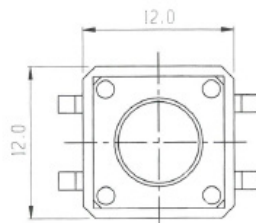
12x12mm Tact Switches

- Advanced switch technology
- Positive tactile action
- Tamper proof application
- Flow solder wash-away cleaning
- Through-hole PCB & surface mount terminals
- Square & round button styles
- Choice of button caps
- Can be supplied taped for auto-insertion, add suffix /T

| SPECIFICATION | |
|---------------------|--|
| Rating | 50mA/12VDC |
| Contact resistance | 100mΩ max |
| Insulation strength | 100MΩ min/500VDC |
| Electrical life | CST12S0AT 100,000 operations min CST12S43T 100,000 operations min CST12S0AS 100,000 operations min CST12S43S 100,000 operations min |
| Temperature range | -10°C to +60°C |
| Operating force | 180 ± 70g |
| Material | Case Nylon Button Nylon Contacts Phosphor Bronze Silver Plated |
| Terminals | Brass Silver Plated |

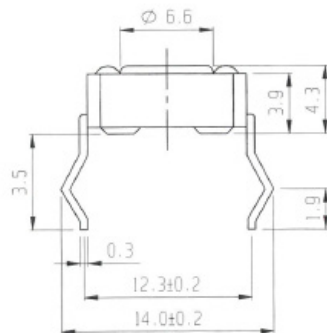
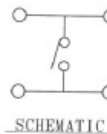
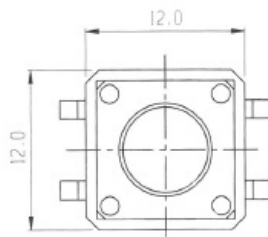
Through-hole PCB Terminals

| TYPE NO. | BUTTON HEIGHT |
|-----------|---------------|
| CST12S0AT | 7.3mm |
| CST12S43T | 4.3mm |



Surface Mount

| TYPE NO. | BUTTON HEIGHT |
|-----------|---------------|
| CST12S0AS | 7.3mm |
| CST12S43S | 4.3mm |



PCB
TERMINAL
BLOCKS

INTER-
CONNECTION

FUSES &
FUSE-
HOLDERS

LEDs &
INDICATORS

MINIATURE
SWITCHES

LIMIT &
SAFETY
SWITCHES

CONTROL
PRODUCTS

INTERFACE
MODULES &
SUPPORTS

RELAY
BASES

ENCLOSURES

BATTERIES

TRANS-
FORMERS



+44 (0)1638 716101
info@camdenboss.com
www.camdenboss.com

We operate a constant improvement policy,
our products are subject to change without notice.

Ver 1.1
Iss 2

CAMDENBOSS
ELECTRONICS & ENCLOSURES



CAMDENBOSS
ELECTRONICS & ENCLOSURES

60 James Carter Road
Mildenhall
Suffolk
IP28 7DE
UK

+44 (0) 1638 716101
info@camdenboss.com
www.camdenboss.com