

CamdenBoss Components

- PCB Terminal Blocks
- Interconnection
- Fuses & Fuseholders
- LED's and Indicators
- Miniature Switches
- Limit & Safety Switches
- Control Products
- Interface Modules & Supports
- Relay Bases
- Enclosures
- Batteries
- Transformers

CAMDENBOSS
ELECTRONICS & ENCLOSURES

INTERFACE MODULES

Relay Modules	1 Pole	CIM/R1	p169
	2,4,8,16 Pole	CIM/R2-16	p169
I.D.C Interface Modules		CIM/00W-IDCS	p170
Subminiature 'D' Connector Modules	Male D	CIM/00W/DMS	p170
	Female D	CIM/00W/DFS	p170
Diode Module and Component Modules	Diode Module	CIM/8W-D10	p171
	Without diode, component carrier	CIM/8W-COMP	p171
Fuse Modules	Screw Terminals	CIM/0W-FU-S	p171
	Pluggable Terminals	CIM/0W-FU-C	p171
Opto-Isolator Interface		CIM/Opto4	p172

INTERFACE MODULES & SUPPORTS

EMPTY INTERFACE SUPPORTS

Mini Series 72mm Empty Modular Interface Supports		CIME/M	p173
Mini Series 72mm Empty Extruded Interface Supports		CIME/M/E	p173
Euro Series 107mm Empty Modular Interface Supports		CIME/E	p175
Euro Series 107mm Empty Extruded Interface Supports		CIME/E/E	p176

USB INTERFACE MODULES

USB A Interface Module 35mm	CIM/USBA	p177
USB B Interface Module 35mm	CIM/USBB	p177

RJ45 INTERFACE MODULES

CIM/RJ45	p178
CIM/RJ45/C	p178
CIM/XXW-IDC	p179

MULTIPLE IDC MODULES

CIM/XXW-IDC	p179
-------------	------

MALE AND FEMALE D-CONNECTOR INTERFACE MODULES

CIM/XXW-DMFS	p180
--------------	------

INTERFACE MODULES & SUPPORTS

PCB
TERMINAL
BLOCKS

INTER-
CONNECTION

FUSES &
FUSE-
HOLDERS

LEDs &
INDICATORS

MINIATURE
SWITCHES

LIMIT &
SAFETY
SWITCHES

CONTROL
PRODUCTS

INTERFACE
MODULES &
SUPPORTS

RELAY
BASES

ENCLOSURES

BATTERIES

TRANS-
FORMERS

1 Pole Relay Modules

- Fits all standard DIN Rail
- Option on connections: screw terminal blocks or pluggable terminals
- Available with plug-in relay for easy replacement or the economy style with relay mounted directly onto the PCB

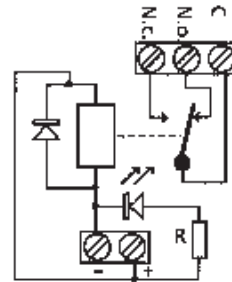
CIM/R1



TYPE NO.	BASE OPTION	LENGTH
CIM/R1 -WB-S-24	with base	screw terminals
CIM/R1 -WO-S-24	without base	screw terminals
CIM/R1 -WB-C-24	with base	pluggable terminals (vertical mating)
CIM/R1 -WO-C-24	without base	pluggable terminals (vertical mating)

SPECIFICATION

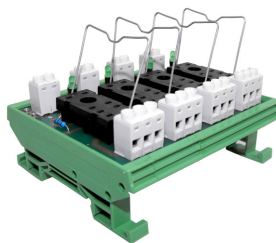
Input operating voltage	24V DC
Operating power	0.5W
Contact configuration	1 changeover
Max switching voltage	250VAC
Max output current	5A
Max switching power	1250VA
Contact material	Ag
Conductor size	4mm ²
LED colour	Green
Electrical life	100x10 ³ (at rated load)
Mechanical life	20x10 ⁶
Width	82mm
Length	22.5mm
Projection	65mm with base 52mm without base



2, 4, 8 Pole Relay Modules

- 3 wiring options:
The modules can operate as individual relays or by utilising shorting links, provide a common negative or positive or a combination of all these
- By shorting across
A = Common Positive
B = Common Negative

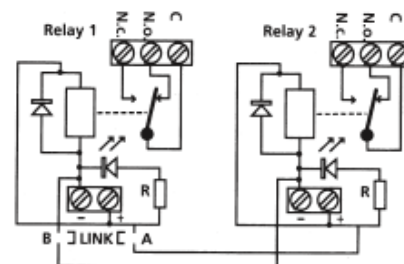
CIM/R2-16



TYPE NO.	POLES	BASE OPTION	LENGTH
CIM/R2 -WB-S-24	2	with base	screw terminals
CIM/R2 -WO-S-24	2	without base	screw terminals
CIM/R2 -WB-C-24	2	with base	pluggable terminals (vertical mating)
CIM/R2 -WO-C-24	2	without base	pluggable terminals (vertical mating)
CIM/R4 -WB-S-24	4	with base	screw terminals
CIM/R4 -WO-S-24	4	without base	screw terminals
CIM/R4 -WB-C-24	4	with base	pluggable terminals (vertical mating)
CIM/R4 -WO-C-24	4	without base	pluggable terminals (vertical mating)
CIM/R8 -WB-S-24	8	with base	screw terminals
CIM/R8 -WO-S-24	8	without base	screw terminals
CIM/R8 -WB-C-24	8	with base	pluggable terminals (vertical mating)
CIM/R8 -WO-C-24	8	without base	pluggable terminals (vertical mating)

SPECIFICATION

Input operating voltage	24V DC
Operating power	0.5W
Contact configuration	1 changeover
Max switching voltage	250VAC
Max output current	5A
Max switching power	1250VA
Contact material	Ag
Conductor size	4mm ² Max
LED colour	Green
Electrical life	100x10 ³ (at rated load)
Mechanical life	20x10 ⁶
Width	82mm
Length	2 channels 45mm 4 channels 90mm 8 channels 169mm

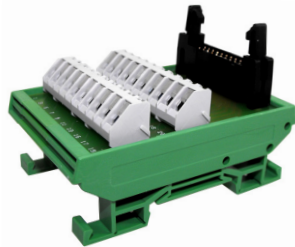


INTERFACE MODULES & SUPPORTS

I.D.C Interface Modules

- Low profile
- Cable acceptance of up to 4mm²
- 45° cable entry for easy access
- Ensures simple and speedy interfacing between data and field cables
- Custom interfaces available to order

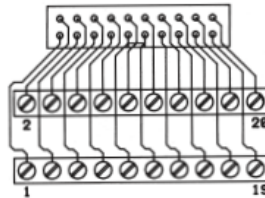
IDC



SPECIFICATION

Voltage	50V DC max
Current	1A max
Connections	Screw terminal 45° Rising clamp 4mm ² wire acceptance
Width	82mm all types
Length	10 pole 55mm 20 pole 55mm 26 pole 80mm 34 pole 90mm 40 pole 113mm 50 pole 134mm

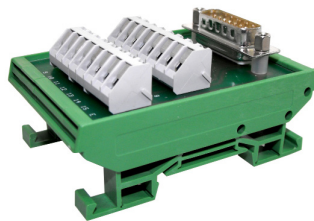
TYPE NO.	POLES
CIM/10W-IDCS	10
CIM/20W-IDCS	20
CIM/26W-IDCS	26
CIM/34W-IDCS	34
CIM/40W-IDCS	40
CIM/50W-IDCS	50



Subminiature 'D' Connector Modules

- Low profile
- Cable acceptance of up to 4mm²
- 45° cable entry for easy access
- Ensures simple and speedy interfacing between data and field cables
- Sub-miniature D male or female
- Custom interfaces available to order

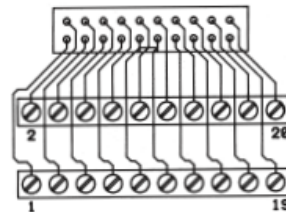
CIM/W-D



SPECIFICATION

Voltage	50V DC max
Current	1A max
Connections	Screw terminal 45° Rising clamp 4mm ² wire acceptance
Width	82mm all types
Length	9 way 34mm 15 way 57mm 25 way 80mm 37 way 113mm
Earth	The metal surround of the D is used and taken to connector terminal

TYPE NO.	WAYS	D CONNECTOR
CIM/9W-DMS	9	Male 'D'
CIM/15W-DMS	15	Male 'D'
CIM/25W-DMS	25	Male 'D'
CIM/37W-DMS	37	Male 'D'
CIM/9W-DFS	9	Female 'D'
CIM/15W-DFS	15	Female 'D'
CIM/25W-DFS	25	Female 'D'
CIM/37W-DFS	37	Female 'D'



+44 (0)1638 716101
info@camdenboss.com
www.camdenboss.com

We operate a constant improvement policy, our products are subject to change without notice.

Ver 1.1

CAMDENBOSS
ELECTRONICS & ENCLOSURES

INTERFACE MODULES & SUPPORTS

Diode Module and Component Modules

PCB
TERMINAL
BLOCKS

INTER-
CONNECTION

FUSES &
FUSE-
HOLDERS

LEDs &
INDICATORS

MINIATURE
SWITCHES

LIMIT &
SAFETY
SWITCHES

CONTROL
PRODUCTS

INTERFACE
MODULES &
SUPPORTS

RELAY
BASES

ENCLOSURES

BATTERIES

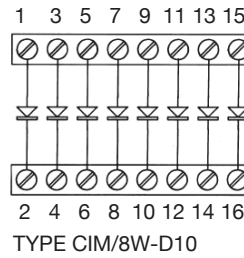
TRANS-
FORMERS

- Protects against return voltage to circuits
- Low profile
- 45° cable entry for easy access
- Available also as a component carrier
- Custom interfaces available to order



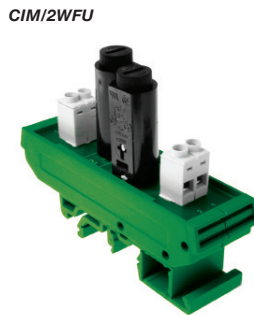
TYPE NO.	POLES
CIM/8W-D10	Diode module
CIM/8W-COMP	without diodes component carrier

SPECIFICATION	
Voltage	250V DC max
Current	1A max
Characteristics of IN4007	1000V Peak 250V 1Amp
Width	82mm
Length	45mm



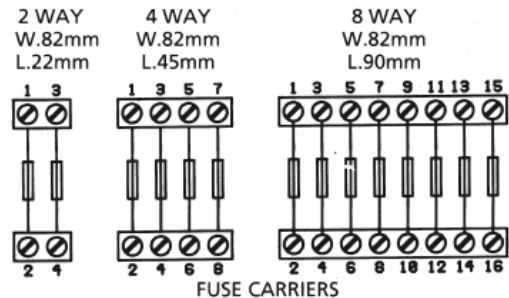
Fuse Modules

- Available with either screw terminal blocks or pluggable terminals
- Available with LED indication
- Custom interfaces available to order
- us approved fuseholder



SPECIFICATION	
Voltage	250V AC max
Fuse	Current max per fuse 3A, max total 6.3A
Fuse size	20x5mm full range available
Fuseholders	Screwdriver release, boyonet cap
Terminations	Rising clamp 4mm ² wire acceptance
Width	82mm all types
Length	2 way 22mm 4 way 45mm 8 way 45mm

TYPE NO.	FUSES	TERMINAL
CIM/2WFU-S	2	screw terminals
CIM/2WFU-C	2	pluggable terminals (vertical mating)
CIM/4WFU-S	4	screw terminals
CIM/4WFU-C	4	pluggable terminals (vertical mating)
CIM/8WFU-S	8	screw terminals
CIM/8WFU-C	8	pluggable terminals (vertical mating)

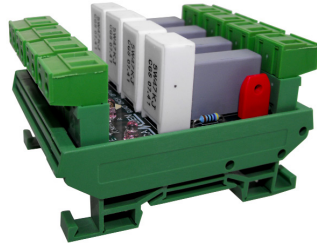


INTERFACE MODULES & SUPPORTS

Opto-Isolator Interface

- Four independent isolated channels
- Plug-in vertical terminal blocks
- On board LED for input check
- DC polarity insensitive
- Floating 300VDC/150mA Darlingtons
- For pull-down, isolation & noise-reduction, machine logic voltage shifter or drive panel LED indicator applications
- Low output current sufficient for medium-sized relays
- Sufficient current at low output voltages for medium size relays
- AC or DC input selector by jumper

CIM/Opto4



TYPE NO.	DESCRIPTION
CIM/Opto4	4 channel opto isolator

SPECIFICATION		
Input	DC	24-400V
	AC	24-265V
Output	DC	300VDC/150mA
		max power 150mW
Input-output isolation		2kVAC
Cable entry		2.5mm ²

PCB
TERMINAL
BLOCKS

INTER-
CONNECTION

FUSES &
FUSE-
HOLDERS

LEDs &
INDICATORS

MINIATURE
SWITCHES

LIMIT &
SAFETY
SWITCHES

CONTROL
PRODUCTS

INTERFACE
MODULES &
SUPPORTS

RELAY
BASES

ENCLOSURES

BATTERIES

TRANS-
FORMERS



+44 (0)1638 716101
info@camdenboss.com
www.camdenboss.com

We operate a constant improvement policy,
our products are subject to change without notice.

Ver 1.1

CAMDENBOSS
ELECTRONICS & ENCLOSURES

INTERFACE MODULES & SUPPORTS

Mini Series 72mm Empty Modular Interface Supports

- Suitable for 72mm width PCB's
- Modular Construction for easy Assembly
- Snap fit Din Rail mounting fixtures
- Moulded in green UL 94V0 flame retardant PA
- Wall mounting kit option
- Terminal blocks available in same colour
- Integral marker facility
- Registered Design No: 2106418®

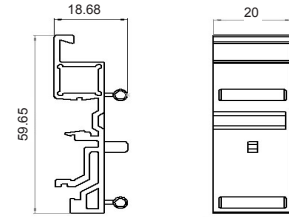
- Also available in different colours
- End section foot for top hat DIN rail

CIME/M

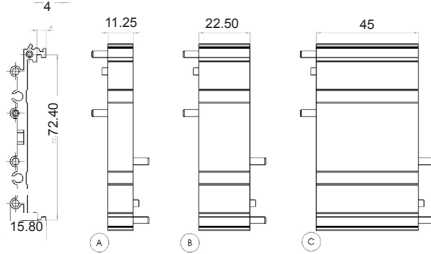


TYPE NO.	DESCRIPTION	WIDTH
CIME/M/BE1125SS	Base element	11.25mm
CIME/M/BE2250SS	Base element	22.5mm
CIME/M/BE4500SS	Base element	45.0mm
CIME/M/SE1125SS	End Section	11.25mm
CIME/M/SE2250SS	End Section	22.5mm
CIME/M/SEF1125SS	End Section with foot	11.25mm
CIME/M/SEF2250S	End Section with foot	22.5mm
CIME/M/FE0000SS	Foot element	

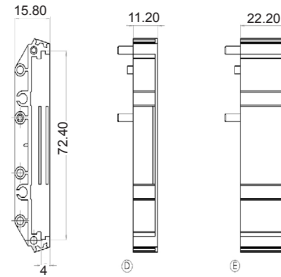
FOOT ELEMENT



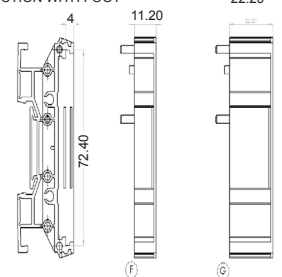
BASE ELEMENT



END SECTION



END SECTION WITH FOOT



CIME/M	END SECTION			BASE ELEMENTS		PART COUNT
	SEF1125SS	SEF2250SS	BE1125SS	BE2250SS	BE4500SS	
TOTAL PCB LENGTH	10mm	21.25mm	11.25mm	22.5mm	45.0mm	
20mm	2					2
31.25mm	1	1				2
42.5mm		2				2
53.75mm		2	1			3
65mm		2		1		3
76.25mm	1	1			1	3
87.5mm		2			1	3
98.75mm		2	1		1	4
110mm		2		1	1	4
121.25mm	1	1			2	4
132.5mm		2			2	4
143.75mm		2	1		2	5
155mm		2		1	2	5
166.25mm	1	1			3	5
177.5mm		2			3	5

The Table above shows how, for a given PCB Length, modules can be selected to make an interface support

Wall Mounting Plates

- Flush and raised surface mounting plates
- Press into sides of end section without tool
- Use foot element on long lengths with raised plates

TYPE NO	STYLE
CIME/M/MPF	Flush
CIME/M/MPR	Raised



INTERFACE MODULES & SUPPORTS

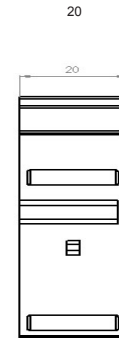
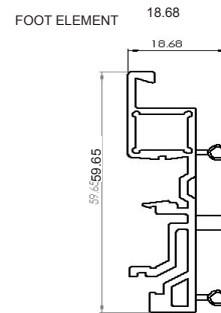
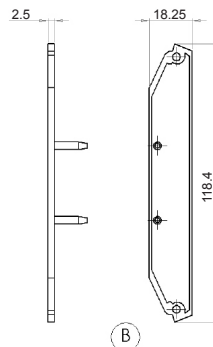
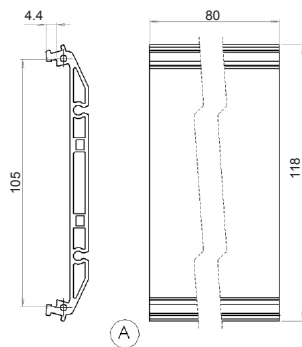
Mini Series 72mm Empty Extruded Interface Support

- Suitable for 72mm width PCB's
- Snap fit Din Rail mounting fixtures
- Available in pre-cut lengths up to 2 metres
- Terminal blocks available in same colour
- Base is moulded in PVC
- End caps and feet are moulded in green UL94-V0 flame retardant PA



TYPE NO.	DESCRIPTION
CIME/M/BE2000E	2m Extruded base element
CIME/M/EC0000E	End cover
CIME/M/SCREWE	Fixing screws for end covers
CIME/M/FE0000E	Foot element

CIME-M-E



- Drawing Tolerance is +0.7

Complete Modules

- Cut to length base element
- One end & feet supplied pre-assembled
- One end & screws supplied loose

LENGTH	NO. OF FEET	TYPE NO.	DESCRIPTION
16-50mm	1	CIM72/xxxx/E	Complete module
51-150mm	2		
151-300mm	3		
301-500mm	4		
501-750mm	5		
751-999mm	6		

PCB
TERMINAL
BLOCKS

INTER-
CONNECTION

FUSES &
FUSE-
HOLDERS

LEDs &
INDICATORS

MINIATURE
SWITCHES

LIMIT &
SAFETY
SWITCHES

CONTROL
PRODUCTS

INTERFACE
MODULES &
SUPPORTS

RELAY
BASES

ENCLOSURES

BATTERIES

TRANS-
FORMERS



+44 (0)1638 716101
info@camdenboss.com
www.camdenboss.com

We operate a constant improvement policy,
our products are subject to change without notice.

Ver 1.1
Iss 2

CAMDENBOSS
ELECTRONICS & ENCLOSURES

INTERFACE MODULES & SUPPORTS

Euro series 107mm Empty Modular Interface Support

- Suitable for 107mm width PCB's
- Modular Construction for easy assembly
- Snap fit Din Rail mounting fixtures
- Moulded in green UL 94V0 flame retardant PA
- Terminal blocks available in same colour
- Integral marker facility
- Integral Din rail mounting clip

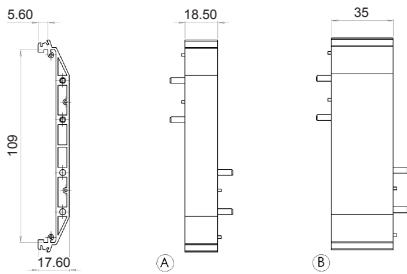


PCB LENGTH	END SECTION	BASE ELEMENT		PART COUNT	
		11.5mm	18.5mm		35mm
20mm	2			2	
38.5mm	2		1	3	
55mm	2			1	3
73.5mm	2		1	1	4
90mm	2			2	4
108.5mm	2		1	2	5
125mm	2			3	5
143.5mm	2		1	3	6
160mm	2			4	6
178.5mm	2		1	4	7
195mm	2			5	7
213.5mm	2		1	5	8
230mm	2			6	8
248.5mm	2		1	6	9
265mm	2			7	9

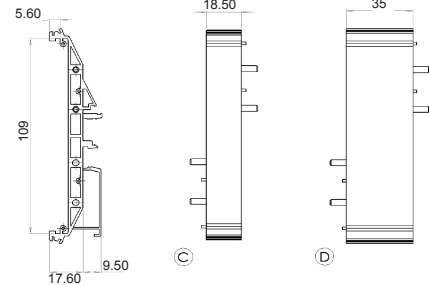
The Table above shows how, for a given PCB Length, modules can be selected to make an interface support

TYPE NO.	DESCRIPTION	WIDTH
CIME/E/BE1850S	Base element	18.5mm
CIME/E/BE3500S	Base element	35mm
CIME/E/BEF1850S	Base element with foot	18.5mm
CIME/E/BEF3500S	Base element with foot	35mm
CIME/E/SE1000S	End Section	11.5mm
CIME/E/SEF1000S	End Section with foot	11.5mm

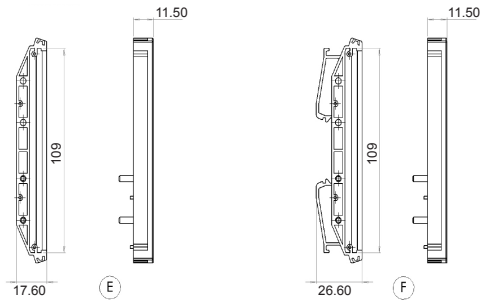
BASE ELEMENTS



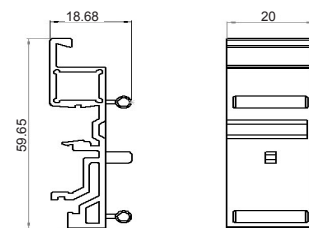
BASE ELEMENTS WITH FOOT



END SECTION



FOOT ELEMENT



Wall Mounting Plates

- Flush and raised surface mounting plates
- Press into sides of end section without tool
- Use foot element on long lengths with raised plates

TYPE NO	STYLE
CIME/E/MPF	Flush
CIME/E/MPR	Raised



INTERFACE MODULES & SUPPORTS

Euro series 107mm Empty Extruded Interface Support

- Suitable for 107mm width PCB's
- Snap fit Din Rail mounting fixtures
- Available in pre-cut lengths up to 2 metres
- Terminal blocks available in same colour
- Base is moulded in PVC
- End caps and feet are moulded in green UL94-V0 flame retardant PA

CIME/E/E

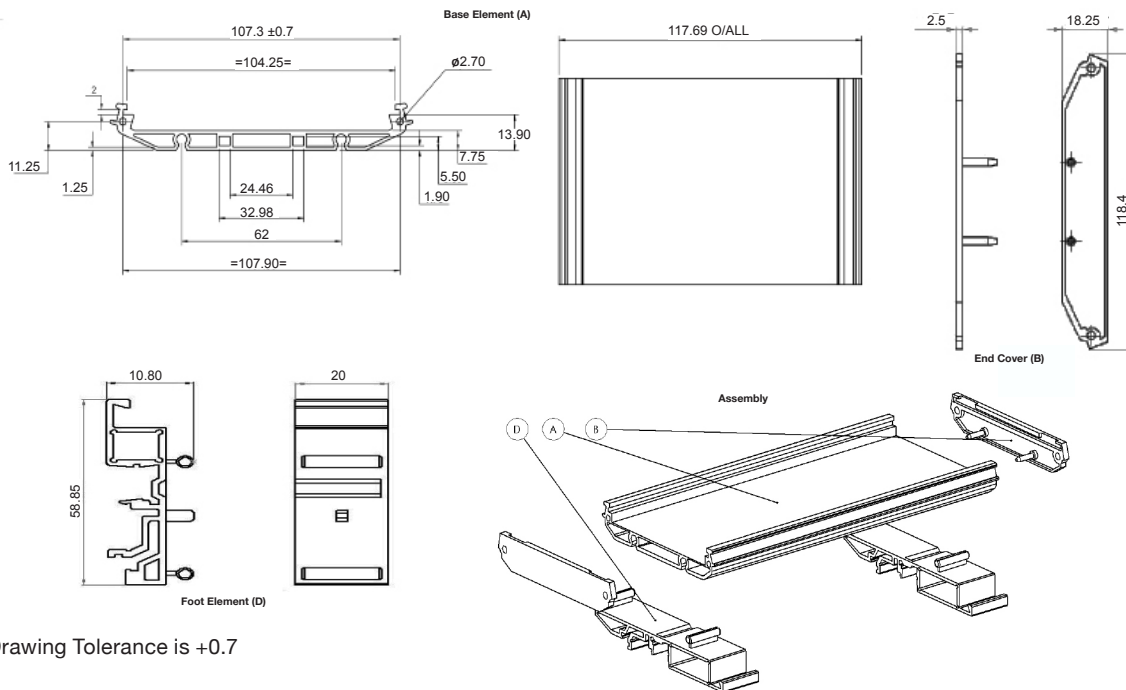


TYPE NO.	DESCRIPTION
CIME/E/BE2000E	2m Extruded base element
CIME/E/EC0000E	End cover
CIME/E/SCREWE	Fixing screws for end covers
CIME/E/FE0000E	Foot element

Complete Modules

- Cut to length base element
- One end & feet supplied pre-assembled
- One end & screws supplied loose

LENGTH	NO. OF FEET	TYPE NO.	DESCRIPTION
16-50mm	1	CIM107/xxxx/E	Complete module
51-150mm	2		
151-300mm	3		
301-500mm	4		
501-750mm	5		
751-999mm	6		



• Drawing Tolerance is +0.7

PCB
TERMINAL
BLOCKS

INTER-
CONNECTION

FUSES &
FUSE-
HOLDERS

LEDs &
INDICATORS

MINIATURE
SWITCHES

LIMIT &
SAFETY
SWITCHES

CONTROL
PRODUCTS

INTERFACE
MODULES &
SUPPORTS

RELAY
BASES

ENCLOSURES

BATTERIES

TRANS-
FORMERS



+44 (0)1638 716101
info@camdenboss.com
www.camdenboss.com

We operate a constant improvement policy,
our products are subject to change without notice. Ver 1.1
Iss 3

CAMDENBOSS
ELECTRONICS & ENCLOSURES

INTERFACE MODULES & SUPPORTS

PCB
TERMINAL
BLOCKS

INTER-
CONNECTION

FUSES &
FUSE-
HOLDERS

LEDs &
INDICATORS

MINIATURE
SWITCHES

LIMIT &
SAFETY
SWITCHES

CONTROL
PRODUCTS

INTERFACE
MODULES &
SUPPORTS

RELAY
BASES

ENCLOSURES

BATTERIES

TRANS-
FORMERS

USB A Interface Module

- Single USB A type socket to screw terminals
- Terminals marked +5V, D-, D+ and GND
- Separate shield connection
- 35mm DIN rail mounting
- Option for 32mm (G) rail mounting
- Available with optional wall mounting plates
- 45° terminals for easy access
- RoHS compliant
- SVHC free (2012)

CIM/USBA



SPECIFICATION

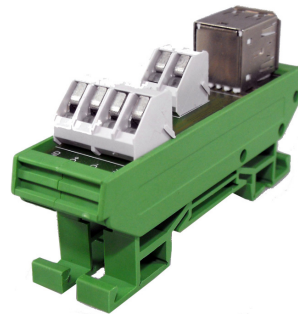
Rating	30V DC 100mA		
Cable entry	0.2-4mm ² (30-12 AWG)		
Terminal screw	M3		
Strip length	6mm (0.24")		
Max terminal torque	0.5Nm (4lb-in)		
Dimensions:	Height:	Width:	Length:
CIM/USBA	44mm (1.73")	83mm (3.27")	26mm (1.02")

TYPE NO.	DESCRIPTION
CIM/USBA	USB A to screw terminal interface. 35 mm Din Rail mounting

USB B Interface Module

- Single USB B type socket to screw terminals
- Terminals marked +5V, D-, D+ and GND
- Separate shield connection
- 35mm DIN rail mounting
- Option for 32mm (G) rail mounting
- Available with optional wall mounting plates
- 45° terminals for easy access
- RoHS compliant
- SVHC free (2012)

CIM/USBB



SPECIFICATION

Rating	30V DC 100mA		
Cable entry	0.2-4mm ² (30-12 AWG)		
Terminal screw	M3		
Strip length	6mm (0.24")		
Max terminal torque	0.5Nm (4lb-in)		
Dimensions:	Height:	Width:	Length:
CIM/USBB	41mm (1.61")	83mm (3.27")	26mm (1.02")

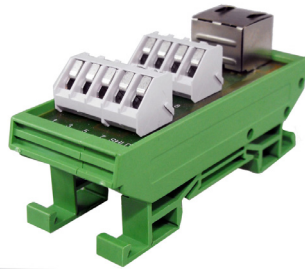
TYPE NO.	DESCRIPTION
CIM/USBB	USB B to screw terminal interface. 35 mm Din Rail mounting

INTERFACE MODULES & SUPPORTS

RJ45 Interface Module

- Single RJ45 (8P8C) type socket to screw terminals
- Terminals marked 1 to 8 (+ Shield)
- Separate shield connection
- 35mm DIN rail mounting
- Option for 32mm (G) rail mounting
- Available with optional wall mounting plates
- 45° terminals for easy access
- RoHS compliant
- SVHC free (2012)

CIM/RJ45



SPECIFICATION

Rating	0.2-4mm ² (30-12 AWG)		
Cable entry	0.2-4m ² (30-12 AWG)		
Terminal screw	6mm (0.24")		
Strip length	6mm (0.24")		
Max terminal torque	Height:	Width:	Length:
Dimensions:	Height	Width	Length

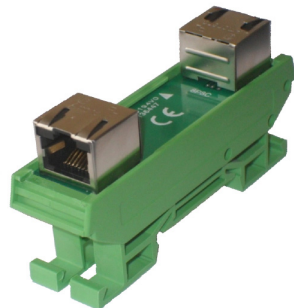
TYPE NO.	DESCRIPTION
CIM/RJ45	RJ45 to screw terminal interface. 35 mm Din Rail mounting

RJ45 Coupler

This module provides a quick and compact method of connecting two RJ45 (8P8C) type cables.

- Two RJ45 (8P8C) type shielded sockets
- Connected pin to pin (1 to 1, 2 to 2 etc)
- 35mm DIN rail mounting
- Option for 32mm (G) rail mounting
- Reverse tab sockets for ease of cable release
- Available with optional wall mounting plates
- RoHS compliant
- SVHC free (2013)
- CE approved

CIM/2RJ45C



SPECIFICATION

Rating	Height:	Width:	Length:
Dimensions:	42mm (1.66")	83mm (3.27")	23mm (0.91")

TYPE NO.	DESCRIPTION
CIM/2RJ45C	RJ45 to RJ45 coupler. 35 mm Din Rail mounting

PCB
TERMINAL
BLOCKS

INTER-
CONNECTION

FUSES &
FUSE-
HOLDERS

LEDs &
INDICATORS

MINIATURE
SWITCHES

LIMIT &
SAFETY
SWITCHES

CONTROL
PRODUCTS

INTERFACE
MODULES &
SUPPORTS

RELAY
BASES

ENCLOSURES

BATTERIES

TRANS-
FORMERS

INTERFACE MODULES & SUPPORTS

Multiple IDC Interface Modules

- Three IDC dual row headers to screw terminals
- Long ejector latches for strain relief sockets
- 35mm DIN rail mounting
- Option for 32mm (G) rail mounting
- Available with optional wall mounting plates
- 45° terminals for easy access
- RoHS compliant
- SVHC free (2012)

CIM/XXXXXXW-IDCS



SPECIFICATION

Rating	50V DC 100mA		
Cable entry	0.2-4mm ² (30-12 AWG)		
Terminal screw	M3		
Strip length	6mm (0.24")		
Max terminal torque	0.5Nm (4lb-in)		
Dimensions:	Height:	Width:	Length:
CIM/101416W-IDCS	56mm (2.20")	83mm (3.27")	46mm (1.81")
CIM/202426W-IDCS	56mm (2.20")	83mm (3.27")	80mm (3.15")
CIM/303440W-IDCS	56mm (2.20")	83mm (3.27")	114mm (4.49")
CIM/506064W-IDCS	56mm (2.20")	83mm (3.27")	170mm (6.69")

TYPE NO.	DESCRIPTION
CIM/101416W-IDCS	10, 14 and 16 way IDC to screw terminal interface. 35 mm Din Rail mount
CIM/202426W-IDCS	20, 24 and 26 way IDC to screw terminal interface. 35 mm Din Rail mount
CIM/303440W-IDCS	30, 34 and 40 way IDC to screw terminal interface. 35 mm Din Rail mount
CIM/506064W-IDCS	50, 60 and 64 way IDC to screw terminal interface. 35 mm Din Rail mount

PCB
TERMINAL
BLOCKS

INTER-
CONNECTION

FUSES &
FUSE-
HOLDERS

LEDs &
INDICATORS

MINIATURE
SWITCHES

LIMIT &
SAFETY
SWITCHES

CONTROL
PRODUCTS

INTERFACE
MODULES &
SUPPORTS

RELAY
BASES

ENCLOSURES

BATTERIES

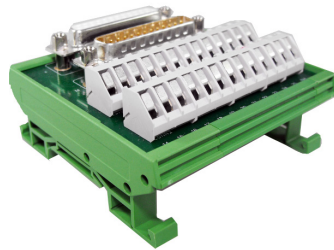
TRANS-
FORMERS

INTERFACE MODULES & SUPPORTS

Male and Female D-Connector Interface Modules

- D Sub male and female to screw terminals
- Terminals marked 1 2 3 etc (+ Shield)
- Separate shield connection
- 35mm DIN rail mounting
- Option for 32mm (G) rail mounting
- Available with optional wall mounting plates
- 45° terminals for easy access
- RoHS compliant
- SVHC free (2012)

CIM/XXW-DMFS



SPECIFICATION

Rating	50V DC 100mA		
Cable entry	0.2-4mm ² (30-12 AWG)		
Terminal screw	M3		
Strip length	6mm (0.24")		
Max terminal torque	0.5Nm (4lb-in)		
Dimensions:	Height:	Width:	Length:
CIM/9W-DMFS	39mm (1.54")	83mm (3.27")	35mm (1.38")
CIM/15W-DMFS	39mm (1.54")	83mm (3.27")	58mm (2.28")
CIM/25W-DMFS	39mm (1.54")	83mm (3.27")	78mm (3.07")
CIM/37W-DMFS	39mm (1.54")	83mm (3.27")	114mm (4.49")
CIM/50W-DMFS	37mm (1.46")	83mm (3.27")	136mm (5.36")

TYPE NO.	DESCRIPTION
CIM/9W-DMFS	9 way male and female D Sub screw terminal interface. 35 mm Din Rail mounting
CIM/15W-DMFS	15 way male and female D Sub screw terminal interface. 35 mm Din Rail mounting
CIM/25W-DMFS	25 way male and female D Sub screw terminal interface. 35 mm Din Rail mounting
CIM/37W-DMFS	37 way male and female D Sub screw terminal interface. 35 mm Din Rail mounting
CIM/50W-DMFS	50 way male and female D Sub screw terminal interface. 35 mm Din Rail mounting

PCB
TERMINAL
BLOCKS

INTER-
CONNECTION

FUSES &
FUSE-
HOLDERS

LEDs &
INDICATORS

MINIATURE
SWITCHES

LIMIT &
SAFETY
SWITCHES

CONTROL
PRODUCTS

INTERFACE
MODULES &
SUPPORTS

RELAY
BASES

ENCLOSURES

BATTERIES

TRANS-
FORMERS



+44 (0)1638 716101
info@camdenboss.com
www.camdenboss.com

We operate a constant improvement policy,
our products are subject to change without notice.

Ver 1.1
Iss 1

CAMDENBOSS
ELECTRONICS & ENCLOSURES



CAMDENBOSS
ELECTRONICS & ENCLOSURES

60 James Carter Road
Mildenhall
Suffolk
IP28 7DE
UK

+44 (0) 1638 716101
info@camdenboss.com
www.camdenboss.com