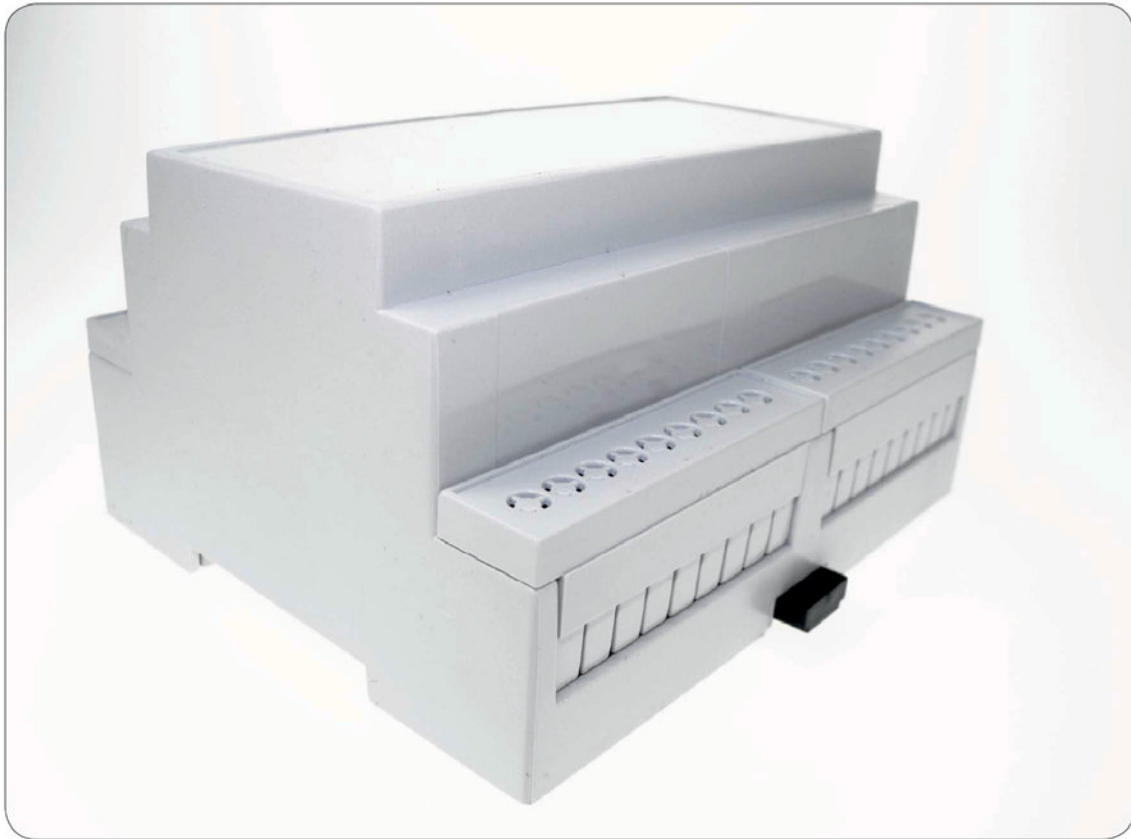


Instruction Manual CNMB Enclosures

Assembly of CNMB Enclosure



● **Finished Module Box**



● **Various Terminal Guards are available allowing for different capabilities**



● **Terminal Guards also snap fit into place and are Inter-changeable**

Instruction Manual CNMB Enclosures

Assembly of CNMB Enclosure



- Also available for the CNMB series are the Extended Height Module range



- The Height Module snap clicks into place and can house an additional PCB



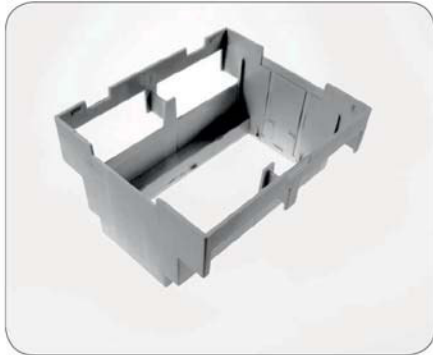
- The curved and hinged lids also are available in grey and transparent



- The moveable lid allowing easy access to the housed PCB board

Instruction Manual CNMB Enclosures

Assembly of CNMB Enclosure



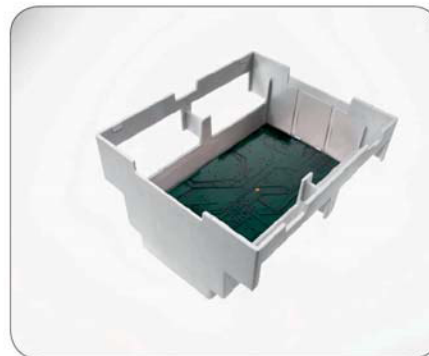
- The Module Box is designed to hold a number of PCB's which snap fit into place



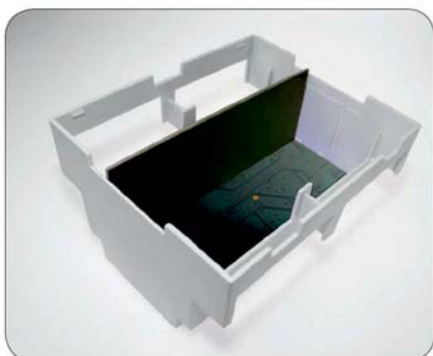
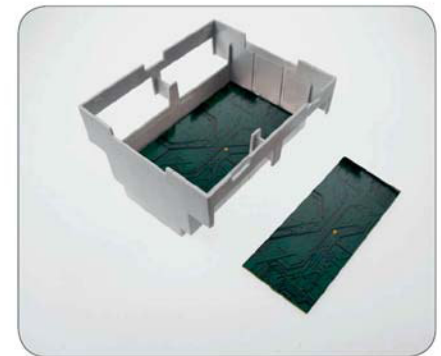
- Each Module Box can hold up to 3 PCB's horizontally and 2/4 vertically



- PCB in top position



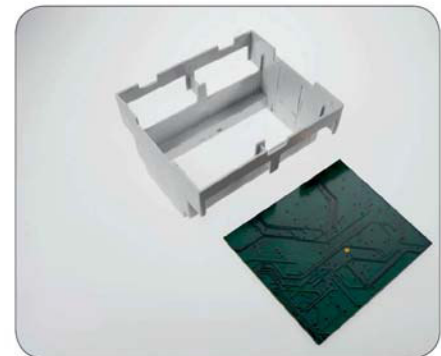
- PCB second position



- PCB vertical mount

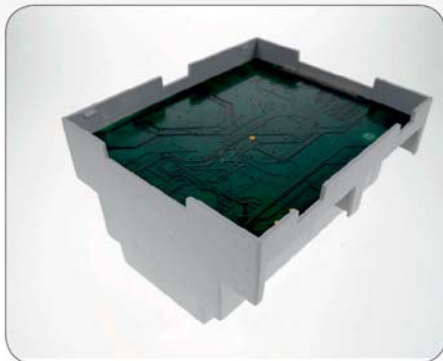


- PCB vertical mount second option

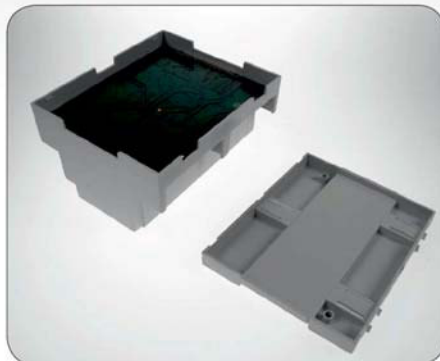


Instruction Manual CNMB Enclosures

Assembly of CNMB Enclosure



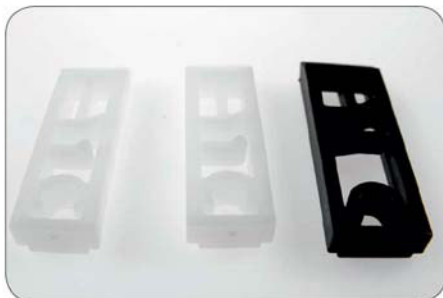
- PCB base position



- Once the required circuitry is in place the base and top can be put on. These also snap fit into place.



- Base is now connected



- The Module box kit comes with clips, allowing steady fastening of its base and snap fit connection to Din Rails.



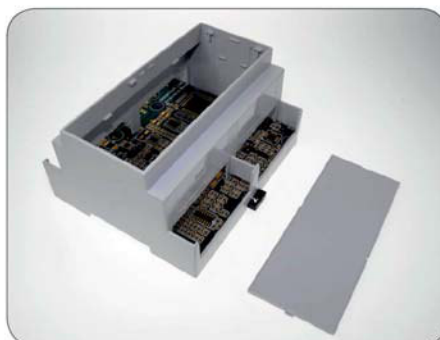
- Each clip slides and clicks into place



- Push in from the inside toward the outside



- Clips are now connected



- Module Box with top cover. (These are available in grey transparent and red)



- Top cover connected