

PCB TERMINAL BLOCKS

5mm Pitch Standard Profile Rising Clamp Terminal

PCB
TERMINAL
BLOCKS

INTER-
CONNECTION

FUSES &
FUSE-
HOLDERS

LEDs &
INDICATORS

MINIATURE
SWITCHES

LIMIT &
SAFETY
SWITCHES

CONTROL
PRODUCTS


INTERFACE
MODULES &
SUPPORTS

RELAY
BASES

ENCLOSURES

BATTERIES

TRANS-
FORMERS

- 2 & 3 pole double interlocking mechanism for increased strength
- 4-12 pole solid block end stackable
- Moulded in green UL94-V0 flame retardant PA
- Professional rising clamp terminals
- 0.2-4.0mm² (30-12AWG) solid cable
- 0.2-2.5mm² (30-12AWG) stranded cable
- Guided pin alignment
- Captive screws
-  approved

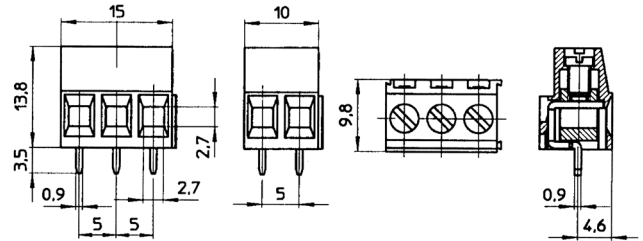
CTB0100




TYPE NO.	POLES	LENGTH
CTB0100/2	2	10mm
CTB0100/3	3	15mm
CTB0100/4	4	20mm
CTB0100/5	5	25mm
CTB0100/6	6	30mm
CTB0100/7	7	35mm
CTB0100/8	8	40mm
CTB0100/9	9	45mm
CTB0100/10	10	50mm
CTB0100/11	11	55mm
CTB0100/12	12	60mm

SPECIFICATION

Rating	24A/250V UL=14A/300V, VDE&IMQ=24A/250V
Dielectric strength	≥2kV
Impulse withstand voltage	4kV
Working temperature	110°C
Moulding	UL94-V0 flame retardant PA
Pin/terminal	Tinned, nickel plated brass
Wire clamp	Nickel plated brass
Screw/torque	M3 steel zinc plated, 0.5Nm
Recommended PCB hole size	ø1.3mm



5mm Pitch Standard Profile 90° Rising Clamp Terminal

- 2 & 3 pole double interlocking mechanism for increased strength
- 4-12 pole solid block end stackable
- Moulded in green UL94-V0 flame retardant PA
- Professional rising clamp terminals
- 0.2-4.0mm² (30-12AWG) solid cable
- 0.2-2.5mm² (30-12AWG) stranded cable
- Guided pin alignment
- Captive screws
-  approved

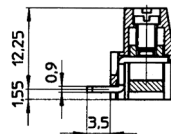
CTB0150



TYPE NO.	POLES	LENGTH
CTB0150/2	2	10mm
CTB0150/3	3	15mm
CTB0150/4	4	20mm
CTB0150/5	5	25mm
CTB0150/6	6	30mm
CTB0150/7	7	35mm
CTB0150/8	8	40mm
CTB0150/9	9	45mm
CTB0150/10	10	50mm
CTB0150/11	11	55mm
CTB0150/12	12	60mm

SPECIFICATION

Rating	24A/250V UL=14A/300V, VDE&IMQ=24A/250V
Dielectric strength	≥2kV
Impulse withstand voltage	4kV
Working temperature	110°C
Moulding	UL94-V0 flame retardant PA
Pin/terminal	Tinned, nickel plated brass
Wire clamp	Nickel plated brass
Screw/torque	M3 steel zinc plated, 0.5Nm
Recommended PCB hole size	ø1.3mm



For other dimensions see CTB0100